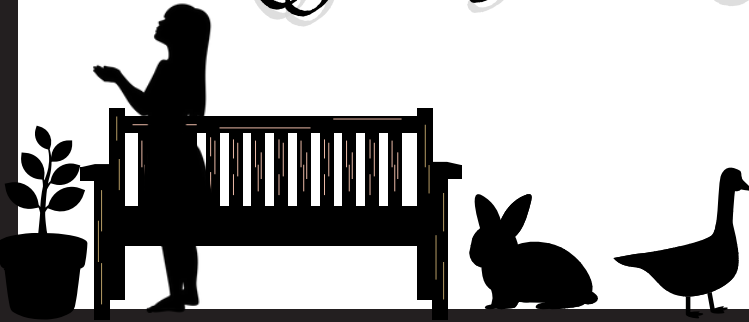


Crystal Murphy Music Presents

# Magic of the Secret Garden

Shadow Puppet Theater with  
Magical Music Performances



## ● ● ● Featuring

**Original music & performances**  
by Crystal Murphy Music

**Shadow puppet performance** by  
Crystal & Nic Murphy of the Murphy  
Murpets

**Interactive, musical activities**

**Life-size felt garden** for children  
to decorate with magical blooms  
from our secret garden

This 1-hour, in-person program is  
designed to be indoors for families  
and children ages 3-7 years old.

Price is \$300 + travel ● ● ●

Enter into a world of **MAGIC** and  
**WONDERMENT** with Ms. Crystal &  
Mr. Nic as they present an  
interactive, 1-hour program full of  
dancing, singing, and shadow  
puppet storytelling.

Patrons will **EXPERIENCE** the play of  
shadow, light, colors, and textures,  
as they learn that with **CARING** and  
**BELIEVING** in something, anything  
can **GROW**.

To reach out for more information about pricing,  
booking, or general inquiries:  
crystal@crystalmurphymusic.com | 208-270-9156  
www.crystalmurphymusic.com

To learn more about the Murphy Murpets and  
their puppet shows contact:  
Nic Murphy  
murphymurpets@gmail.com | 610-620-5881

# Mobile Museum Outreach Program

This program is great for organizations such as libraries, daycares, after-school groups, and classrooms.

In the children's book, *The Secret Garden*, based on the book by Frances Hodgson Burnett, the characters discover a secret all their own.

As part of the Longwood Gardens Community Read Program, the Delaware Museum of Nature and Science comes to you.

Who doesn't love a secret? The Secret Garden will come to you with one of our educators. Learn to love the outdoors through this interactive hour including an interactive book reading, a scene-setting 10x10 tent, and plenty of touchable specimens. Be prepared to get dirty hands!



## MOBILE MUSEUM OUTREACH PROGRAM

**Fee:** \$150 per program

**Maximum:** 40 participants

**Audience:** Families

**Length:** 45-60 minutes

To register: [delmns.org/community-read](https://delmns.org/community-read)  
Questions? Contact [education@delmns.org](mailto:education@delmns.org)  
or call 302-658-9111, ext. 331



## **How a Seed Grows: “The Secret Garden” program for Longwood Gardens Community Read 2024**

Riverbend will visit your school, preserve, library or community center with a nature-based program.

All gardens begin with a tiny seed. Join a Riverbend educator to learn all about seeds! We'll learn the parts of a seed, what seeds need to grow and create a take-home activity to continue observing and learning after the program ends.



### **Program Details:**

**Program length:** 30 - 45 minutes  
**Audience:** Children ages 4-8 and their families. Limit 20 children per program.  
**Cost:** \$200 for one program, \$50 for each additional same day, same site program. Programs are available to visit locations within 10 miles of Riverbend at no additional cost. For locations 10-25 miles from Riverbend, a \$30 travel fee will apply.

**To schedule:** Contact Suzanne Safran at 610-527-5234 ext. 112 or email [ssafran@riverbendec.org](mailto:ssafran@riverbendec.org).

