

# Flower Power and the Map

---

## **At a Glance**

Students will investigate the parts of the flower and learn about characteristics that help flowers attract pollinators.

## **Grades**

K-8 (Modify as desired)

## **Materials**

pencils, clipboards, magnifying glasses (optional)

## **Objectives**

Students will discover the parts of a flower and different characteristics that make flowers attractive to pollinators.

Students will discover different types of flowers in areas around the garden.

Students will use a map to navigate through the garden.

## **National Standards for Science**

Standard 6: Understands relationships among organisms and their physical environment.

Standard 7: Understands biological evolution and the diversity of life.

Standard 12: Understands the nature of scientific inquiry.

## **National Standards for Geography**

Standard 1: Understands the characteristics and uses of maps.

## **Resources**

[www.coevolution.org](http://www.coevolution.org)

[www.fs.fed.us/wildflowers/pollinators/index.shtml](http://www.fs.fed.us/wildflowers/pollinators/index.shtml)



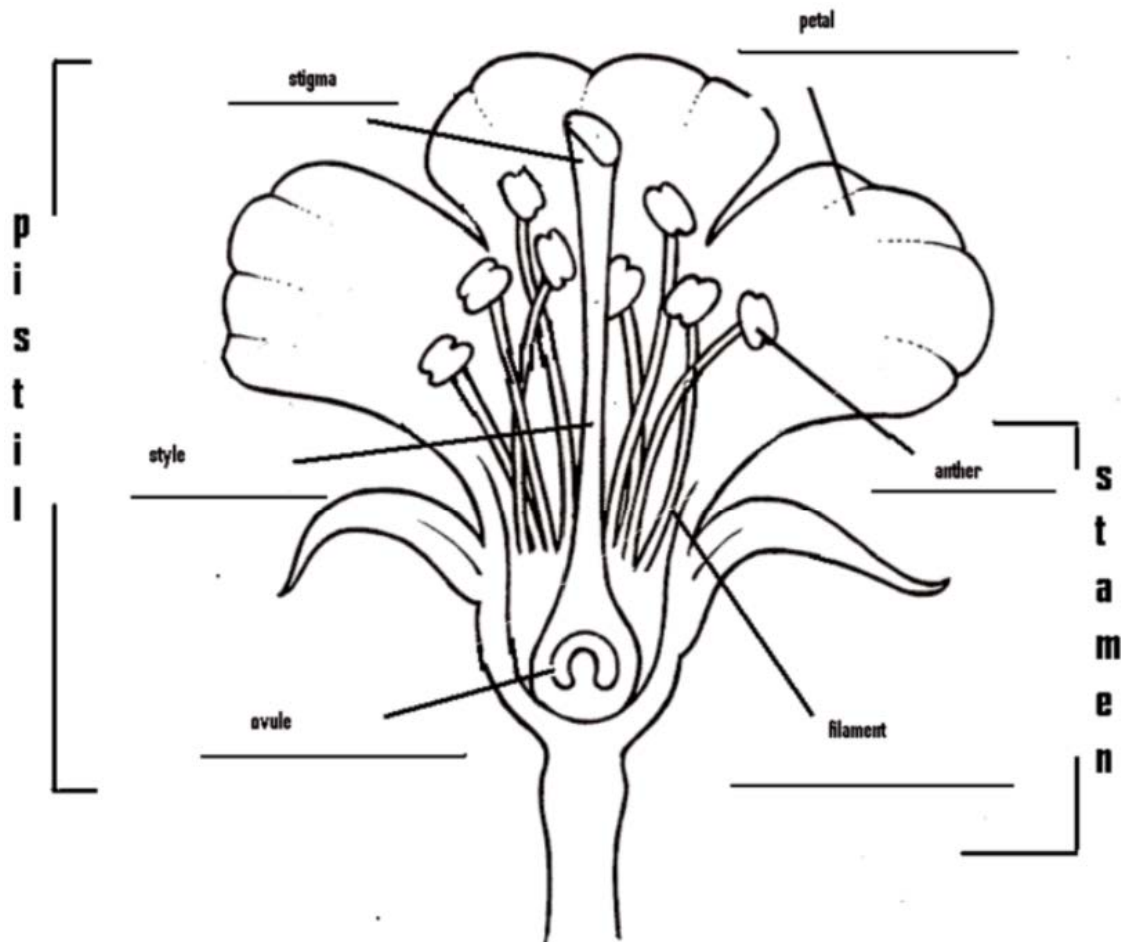
# Flowers

---

## Suggested Location

The Idea Garden

The parts of the flower used in pollination are the anther and stigma. The anther is the male part of the flower that holds the pollen. The pollen needs to travel from the anther of one plant to the stigma of different plant. The pollen must land on the stigma, which is the female part of the flower, in order for pollination to take place. A perfect flower has both the male and female parts. Look at the diagram of a perfect flower below.



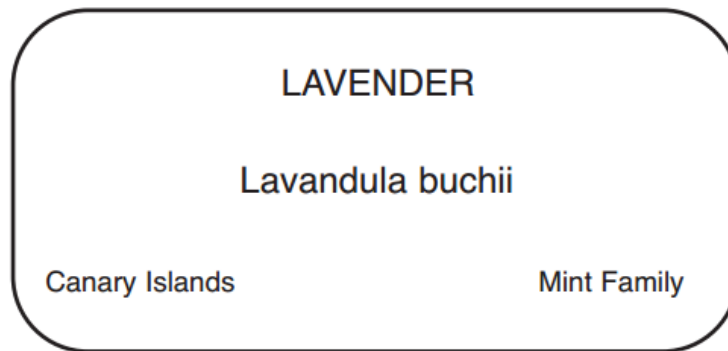
Now look around the garden. See if you can locate the parts of the flower used in pollination. Can you see the pollen on the flower? Can you find the anthers and the stigma?



### Directions

Your mission is to hunt for perfect flowers in different areas of Longwood Gardens. Use the Longwood Gardens guide map to help you locate specific areas. Record the name and characteristics of perfect flower specimens you discover in each of the areas. Look for tags to find the name of the flower. Each tag will have a common name and a scientific name for the plant. It may also include its origin.

Example:



Plan your route before you begin the hunt!

### Garden Area

The Idea Garden

Flower Name	Color	Shape	Scent
1.			
2.			
3.			



**Garden Area**

Flower Garden Walk

Flower Name	Color	Shape	Scent
1.			
2.			
3.			

**Garden Area**

Conservatory

Flower Name	Color	Shape	Scent
1.			
2.			
3.			



**Garden Area**  
Hillside Garden

<b>Flower Name</b>	<b>Color</b>	<b>Shape</b>	<b>Scent</b>
1.			
2.			
3.			

**Follow Up**

Why are color, shape, and scent important to the flower/pollinator relationship?

**On Your Own**

When you return to school, research one or all of the flowers you discovered at Longwood Gardens today. Find out what kinds of pollinators help the flower reproduce. What time of year does this plant typically flower? Share the information you researched.

Why are some flowers called “imperfect flowers”? Describe the characteristics of this type of flowering plant.

